

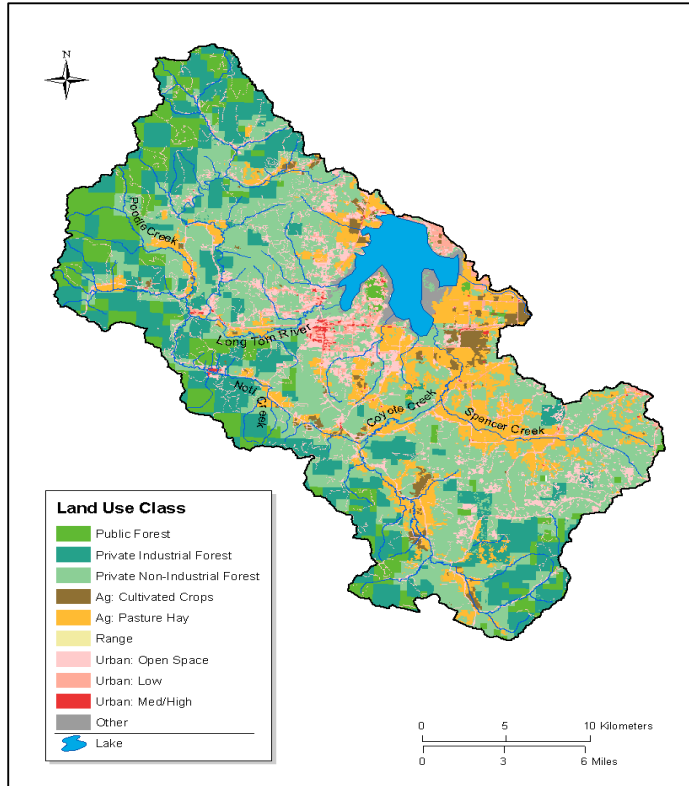
Fern Ridge Lake

Lane County - Willamette River Basin

Lake Origin: Man Made

Elevation: 374 ft (113 meters)

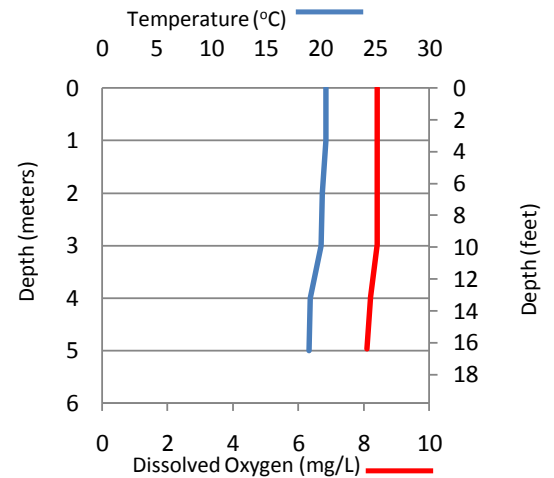
Location: N 44.09042, W-123.30274



WATERSHED CHARACTERISTICS				
Area	Population Density	Annual Precipitation	Dominate Geology	
66,596 HA	111 peop/mi	159 cm	Sandstone	
LAND USE				
Forest	Agriculture	Range	Urban	Other
71%	15%	0%	13%	1%

LAKE CHARACTERISTICS		
Lake Area	Maximum Depth	Manager
2587 HA	5.3 meters	State/Federal

Temperature and Oxygen Profiles



WATER QUALITY PARAMETERS			
Sample Date	6/25/2007	Turbidity (NTU)	13
pH	7.5	Chlorophyll-a (µg/L)	6.18
Conductivity (µmhos/cm)	62	Secchi (meters)	0.85
ANC (µeq/L)	404	Total Phosphorus (mg/L)	<0.004
Calcium Ion (mg/L)	4.55	Total Nitrogen (mg/L)	0.096

LAKE CONDITION		TROPIC STATUS		
Biological Indicators		Secchi	Chlorophyll-a	
Plankton (O/E)		<i>Eutrophic</i>	<i>Mesotrophic</i>	
<i>Fair</i>		Total Phosphorus	Total Nitrogen	
Physical Habitat		<i>Oligotrophic</i>	<i>Oligotrophic</i>	
Shoreline Human Disturbance	Riparian Veg Cover	Littoral Cover	Littoral and Riparian Cover	
<i>Fair</i>	<i>Fair</i>	<i>Fair</i>	<i>Fair</i>	
Water Quality Indicators				
Total Phosphorus	Total Nitrogen	Turbidity	Chlorophyll-a	
<i>Good</i>	<i>Good</i>	<i>Poor</i>	<i>Poor</i>	

